



THE
POWER

OF YOU.

THE
STRENGTH
OF WE.

SMITH
COLLEGE

Where you will
find your voice,
discover your
passions and learn
to lead boldly.

SMITH
COLLEGE



**SCAN FOR SMITH
STORIES**

Open the camera
app on your device
and hold it over the
QR code to activate
the link.



2

ACADEMICS

Courses of Study

Open Curriculum

Smithie Spotlight:
Sidni Standard

10

**COMMUNITY
LIFE**

Alumnae Firsts

Ways to Connect

Residence Life

16

**GLOBAL
LEARNING**

Study Away

Smithie Spotlight:
Natalie
Baillargeon

22

**CAMPUS
LIFE**

Hands-on Research

Smithie Spotlight:
Tess Abbot

Sustainability

Facilities

34

**WHAT'S
NEXT**

Smithie Spotlight:
Michelle Soyeon
Lee

Financial Aid

Apply

AMBITION, ACTIVATED.

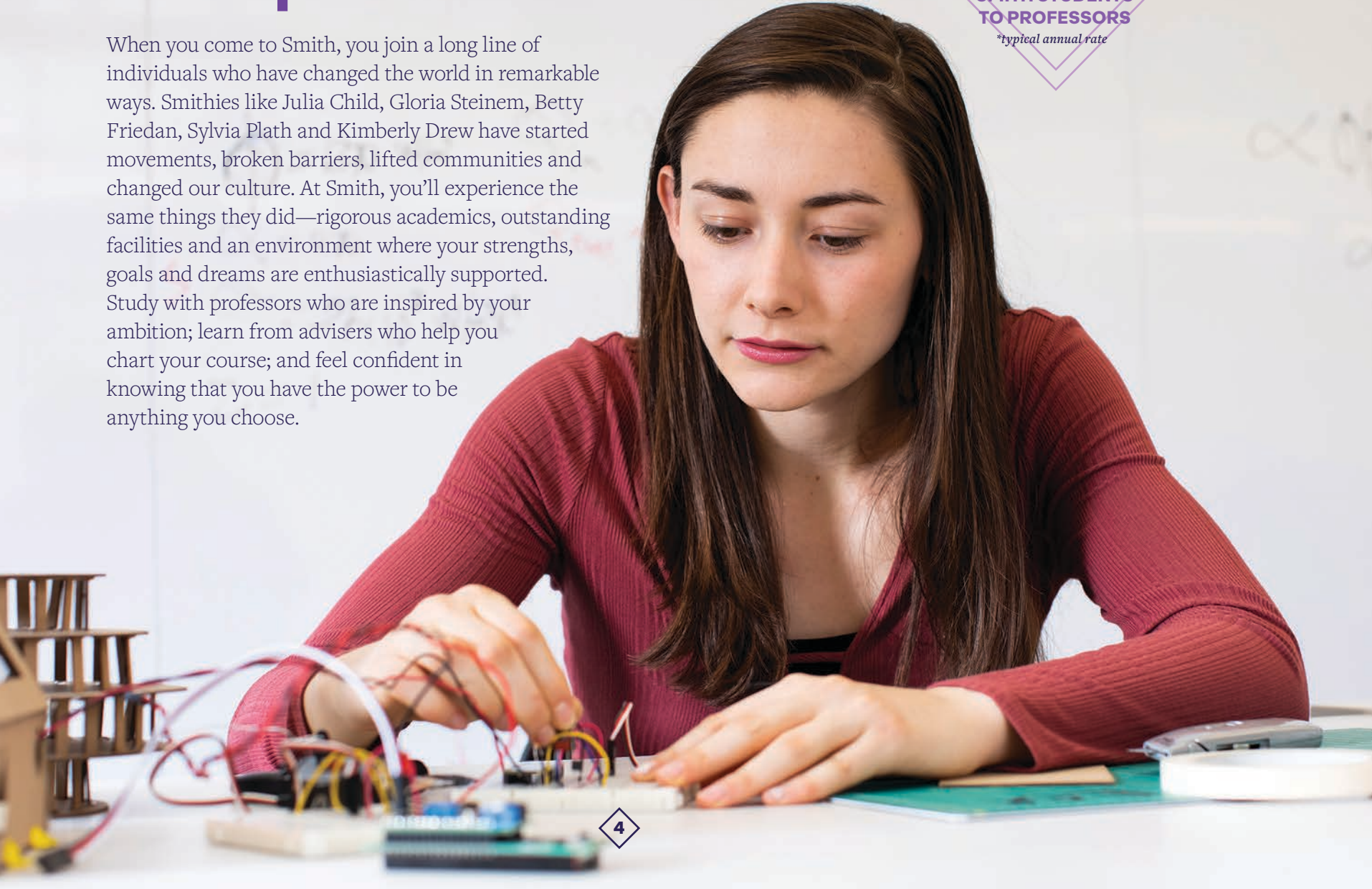


At Smith, one of the largest liberal arts colleges for women, you'll have the support of a community dedicated to making your academic dreams come true. We will empower you to set your own path, to be audacious, to have courage, to express yourself and find your way in the world. That's the boldness of you.

That's the power of Smith.

An education built on becoming your most powerful self.

When you come to Smith, you join a long line of individuals who have changed the world in remarkable ways. Smithies like Julia Child, Gloria Steinem, Betty Friedan, Sylvia Plath and Kimberly Drew have started movements, broken barriers, lifted communities and changed our culture. At Smith, you'll experience the same things they did—rigorous academics, outstanding facilities and an environment where your strengths, goals and dreams are enthusiastically supported. Study with professors who are inspired by your ambition; learn from advisers who help you chart your course; and feel confident in knowing that you have the power to be anything you choose.



Study what moves you.

Our academic programs combine intellectual rigor with the pure joy of learning something new. Here, we encourage you to explore what gives you purpose. Develop global solutions in our accredited engineering program. Analyze market economics. Discover expressive dance. Whatever you choose, our curriculum powerfully prepares you to achieve your goals.



MAJORS

Africana Studies
American Studies
Anthropology
Art: Architecture and Urbanism
Art: History
Art: Studio
Astronomy
Biochemistry
Biological Sciences
Chemistry
Classical Studies
Classics
Computer Science
Dance
East Asian Languages and Cultures
Economics
Education and Child Study
Engineering Science
English Language and Literature
Environmental Science and Policy
Film and Media Studies
French Studies
Geosciences
German Studies
Government
Greek

History
Italian Studies
Jewish Studies
Latin
Latin American Studies
Mathematics
Medieval Studies
Middle East Studies
Music
Neuroscience
Philosophy
Physics
Portuguese-Brazilian Studies
Psychology
Quantitative Economics
Religion
Russian, East European and Eurasian Studies
Sociology
Spanish
Statistical and Data Sciences
Study of Women and Gender
Theatre
World Literatures

In addition to pursuing your major, you can choose among more than 60 minors and a collection of academic concentrations to integrate intellectual and practical experiences into your area of interest.

MORE THAN
1,000
COURSE OFFERINGS
visit smith.edu/academics



THE JOY OF DISCOVERY.

*A liberal arts
emphasis, an open
curriculum and
the opportunity
to explore.*

Grounded firmly in the humanities, arts and sciences, our liberal arts foundation ensures that you have the skills and ability to not only understand our complex world but also lead in it. A Smith education gives you the freedom to explore a wide array of historical ideas and engage in cross-disciplinary conversation. In that same spirit,

we offer an open curriculum—meaning you have the flexibility to choose courses that ignite your passions. In an open curriculum, you're never required to take courses that don't interest you. Instead, you'll shape your own academic journey. Choose courses in any combination—like Arabic, engineering and digital literacy.

It's up to you.

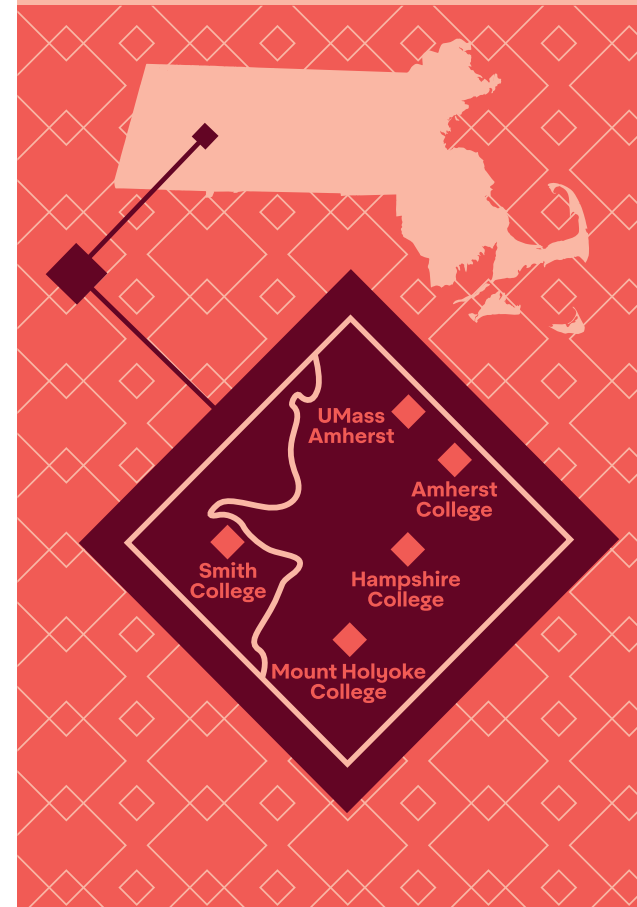


Support like never before.

In addition to having dedicated advisers, you'll always have access to writing support, learning workshops and meaningful career development opportunities through academic support centers.

THE FIVE COLLEGE CONSORTIUM

The Five College Consortium gives you greater flexibility for academic and personal discovery. Within a 12-mile radius of Smith are Amherst, Hampshire and Mount Holyoke colleges and the University of Massachusetts Amherst. Proximity to these schools enables us to offer joint programs like astronomy and architectural studies or queer, transgender and sexuality studies. You're able to take these courses for free as you continue exploring and growing.



“I am so grateful to my mentors. They are truly the most influential people in my life—amazing people who have helped guide me in directions I did not know I would go.”



SIDNI STANDARD

When Sidni transferred to Smith to study pre-med, she immediately took advantage of the incredible array of experiences available to her. Through networking and thoughtful exploration of new ideas, she cultivated her interests in entrepreneurship, startups, technology and digital marketing. Inspired, Sidni switched to a philosophy/economics double major and then to an econ major, philosophy minor. Her path is a true reflection of Smith’s flexible approach to academics and our commitment to supporting and guiding you at every step—inside and outside of the classroom.

“

BETWEEN MY SOPHOMORE AND JUNIOR YEARS, I became interested in entrepreneurship and startups. I reached out to the Lazarus Center for Career Development. They helped me connect with [Mediabistro founder] Laurel Touby ’85. She connected me with Daphne Cheng, an entrepreneur and vegan chef who was starting a new company. From Daphne, I became familiar with Slack

and Google Drive as well as how to effectively research a market you want to enter. From this experience, I began to think about my own startup ideas.

AFTER TWO INTERNSHIPS WITH STARTUPS, I wanted to try something new. I was lucky enough to get a summer internship within the marketing technology department at

New York Life Insurance Company. I focused on web analytics, working with Adobe Omniture to analyze web traffic. In addition, I was part of a website redesign, and I was able to teach myself some coding in CSS and HTML. Here, I developed an immense interest in web design and web analytics.”

EMBOLDENED TO BE

THE FIRST



IN YOUR FIELD.

ADELAIDE BROWN, 1888

First woman on California State Board of Health

FLORENCE RENA SABIN, 1893

First woman elected to the National Academy of Sciences

OTELIA CROMWELL, 1900

First African American woman to receive a doctorate from Yale

HELEN WALBRIDGE, 1902

First woman doctor on staff at New York Hospital in Manhattan

LUCILE ATCHERSON CURTIS, 1913

First woman appointed to the U.S. Foreign Service

MARTHA EUPHEMIA LOFTON HAYNES, 1914

First African American woman to earn a doctorate in mathematics

EUNICE HUNTON CARTER, 1921

First black woman district attorney in New York City

**ELIZABETH STOFFREGEN MAY, 1928**

First woman member of board of directors of U.S. Export-Import Bank

BARBARA POLK WASHBURN, 1935

First woman to climb Mt. McKinley

ANN BAUMGARTNER CARL, 1939

First woman to fly a jet plane

ADELAIDE CROMWELL, 1940

First African American faculty member at Hunter College and at Smith College

HELEN (PENNY) BATES CHENERY, 1943

First woman president of Thoroughbred Owners and Breeders Association

MADELINE MCWHINNEY DALE, 1943

First woman officer of the Federal Reserve Bank of New York City

NANCY DAVIS REAGAN, 1943, AND BARBARA PIERCE BUSH, 1947

First ladies of the United States

MARYLIN BENDER ALTSCHUL, 1944First woman editor of *The New York Times* business section**HARI BRISSIMI, 1948**

First woman director in the office of the UN High Commission

BARBARA HULLEY ACKERMANN, 1948

First woman mayor of Cambridge, Massachusetts

KATHERINE WOODRUFF FANNING, 1949

First woman president of American Society of Newspaper Editors

**RENEE CLAIRE FOX, 1949**

First woman chair of a department (sociology) at University of Pennsylvania

FERDINAN B. NANCY STEVENSON, 1949

First woman to serve as lieutenant governor of South Carolina

ELEANOR SANGER, 1950

First woman network television sports producer

CHRISTINE VON WEDEMEYER BESHAR, 1953

First woman partner in New York City's largest law firm

SALLIE MCFAGUE TE SELLE, 1955

First woman dean of an American theological school (Vanderbilt)

ELIZABETH WOODRUFF PINE, 1955

First woman to be elected a New York State judge

ELIZABETH W. MYERS, 1957

First woman ordained an Episcopal priest in Diocese of Central Pennsylvania

**ANN BROWN, 1959**

First woman chair of Consumer Product Safety Commission

MARJORIE FINE KNOWLES, 1960

First inspector general of the U.S. Department of Labor

NG'ENDO MWANGI, 1961

First woman physician in Kenya

VICTORIA CHAN-PALAY, 1965First woman to receive a medical degree *summa cum laude* from Harvard**NANCY WEISS MALKIEL, 1965**

First woman dean of the college at Princeton

JOANNE MARTIN, 1968

First woman to earn tenure at Stanford University's Graduate School of Business

LAURA D'ANDREA TYSON, 1969

First woman to chair White House Council of Economic advisers, under President Clinton

MARIA LOPEZ, 1975

First Hispanic woman appointed to Massachusetts Superior Court

VICTORIA MURDEN MCCLURE, 1985

First woman to row the Atlantic Ocean alone

MITSURU CLAIRE CHINO, 1988

First female executive officer

of any major trading company in Japan, and the youngest

JENNIFER BASKERVILLE-BURROWS, 1988

First African American woman diocesan bishop of the Episcopal Church

FARAH PANDITH, 1990

First special representative to Muslim communities at the U.S. Department of State

SHARMEEN OBAID-CHINOY, 2002First Pakistani to win an Academy Award (*Saving Face*, 2012)

A campus designed for you—and 2,500 of your closest friends.

Connections that last a lifetime—the Smith experience at its best.

Students often choose Smith because it simply feels right. After experiencing the energy and seeing the camaraderie among students, they know that Smith is a special kind of community. At Smith, you'll always have someone to talk to about life, about your dreams and ambitions. The people you meet at Smith will be your friends for life. With friends comes fun, and there is plenty to be had without even leaving campus. Movies, concerts by big-name artists, art shows, special lectures from some of the world's biggest thinkers—there is always something to do. Venture off campus and you'll find lots of great restaurants, music venues, shops and sidewalk cafés. The Pioneer Valley is also known for its array of hiking trails, bike paths and apple orchards—all close to campus. Trains and buses provide easy access to New York City and Boston.



Uncover a passion.

As a Smithie, you're automatically a member of the Student Government Association, which supports more than 150 student organizations. Whether you're interested in social justice, sustainability or sports, Smith has a club for you.

Sensitive, supportive security.

The Smith College Campus Safety Department is committed to keeping you secure. The college has 24-hour security. Safety responses respect Smith's values; all matters and members of the Smith community are treated with respect, support and sensitivity. Smith also has a campuswide emergency notification system.

Compassionate care.

We make it a priority to offer accessible medical and mental-health care. The Schacht Center for Health and Wellness offers support of all kinds including sleep management, self-image development and resilience skills.



“I IMMEDIATELY FELT LIKE I HAD FOUND MY PLACE AT SMITH.”

Molly Aber



SCAN TO HEAR MOLLY'S STORY

A joyful place to belong.

Living alongside one another with compassion, respect and acceptance.

In the spirit of intentional living, Smith does not have traditional dorms or sororities. Instead, you'll live in a house on campus that's specifically designed to foster friendship. Each of the college's 41 self-governing house communities has a distinct character and architectural style. A limited number of senior students are also permitted to live off campus through a lottery process. Wherever you live, you'll find that community comes naturally at Smith.

14



ABOVE: For more than a century, Smithies have celebrated the end of a busy week with Friday afternoon tea.



SCAN
TO HEAR
GIULIA'S
STORY

“ DUCKETT HOUSE
HAS INSPIRED ME

TO BECOME
A BETTER
PERSON

AND REALLY FIND
MY FOOTING
HERE AT SMITH.”

*Giulia
Guiso
Gallisay*
DUCKETT HOUSE

Welcome home.

As an incoming student, you'll be assigned your room and roommate. In addition, you'll share space with housemates from other classes. All Smith houses are unique in that they are self-governing, meaning you establish your own shared culture. It's also a valuable opportunity to find your voice and put it into practice.

Sharing meals and life, together.

Food is a natural rhythm of daily life at Smith, and the college provides an abundance of options. In our nine dining rooms and two campus cafes, we have a range of vegan, vegetarian, gluten-free, kosher and halal menus to please almost any palate. Have lunch with friends at one dining room and dinner at another. Expanded hours ensure that you're able to plan your meals around your schedule.



15

A COMMUNITY OF INTREPID

EXPLOR



Smith students studying abroad
in Castle Hill, New Zealand.

ERS.

Ready to *rise*.

**Smith brings the world to you.
Now, discover what you
bring to the world.**

Living and studying with around 2,500 students from across this country and around the world, you'll develop meaningful friendships, exchange ideas and learn across cultures. You'll discover how to create the kind of change that isn't limited by borders. And when you graduate, you'll have a greater understanding of the world and your place in it.

The world is waiting.

Opportunities for global learning include:

- The Phoebe and John D. Lewis Global Studies Center
- Courses in Latin American studies, Africana studies, Asian studies, Middle East studies, "New Europe" studies and border studies
- Study abroad experiences across the world
- Global leaders in residence



STUDY AWAY PROGRAMS

Our wide variety of study away options can expand your college experience. Travel the globe with faculty-led programs or participate in summer internships abroad. Choose to spend a semester or two in places like Italy, Morocco or Jordan. Smith's study away programs are so impactful that nearly half of all Smithies take advantage of them during their college career.

A NETWORK OF
MORE THAN

53,000
SMITHIES

WORKING AROUND
THE WORLD TO
LAUNCH STUDENTS
IN GLOBAL CAREERS

NATALIE BAILLARGEON

For the past two summers, Natalie has gone to the ends of the earth—literally—studying the effects of climate change in the Yukon-Kuskokwim Delta. As an arctic scientist with the Polaris Project, she measured the depth of thawing in the permafrost, analyzing its implications for Alaska, and the world at large. After transferring to Smith, she continued to harness hands-on experiences to become a greater advocate for combating global warming.

“

The complete loss of permafrost would have irreversible consequences that would not only impact Alaskans but the entire globe. Permafrost stores a vast amount of greenhouse gases, such as methane and carbon dioxide. If that concentration of greenhouse gases was released into the atmosphere, there would be

catastrophic impacts on our climate, accelerating warming like never before. For this reason, the thawing of permafrost is considered the sleeping giant: Scientists believe that if this threshold is passed, the climate would be unrecognizable and likely have impacts that we cannot imagine.”



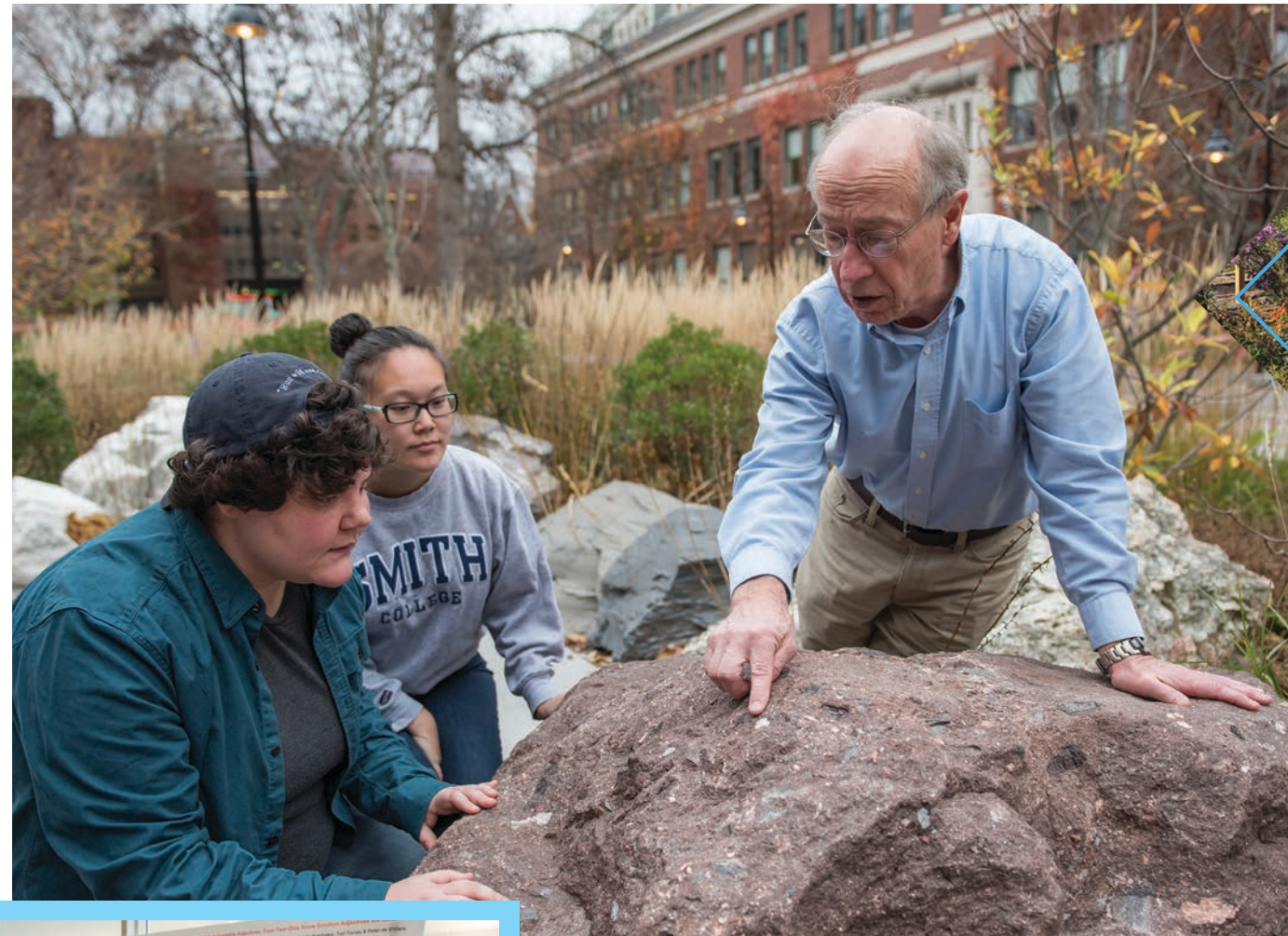
**WITH EMPATHY
AND AUDACITY.
WITH LEADING
AND LISTENING.**

Driven to discover.

Engage in the questions that shape our future.

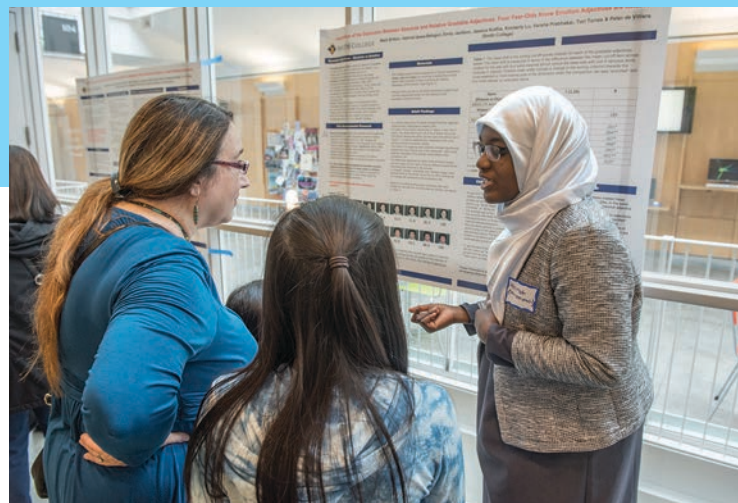
Smith's innovative curriculum empowers you to participate in meaningful, hands-on research tailored to your academic interests. Investigate and analyze pressing questions in areas like genomics, artificial intelligence or neurochemistry. Make profound discoveries through programs like AEMES (Achieving Excellence in Mathematics, Engineering and Sciences) and STRIDE (Student Research in Departments). Learn alongside faculty mentors who guide and inspire your research every step of the way.

Nearly
67%
of Smith's STEM majors participated in research with a faculty member.



Research in motion

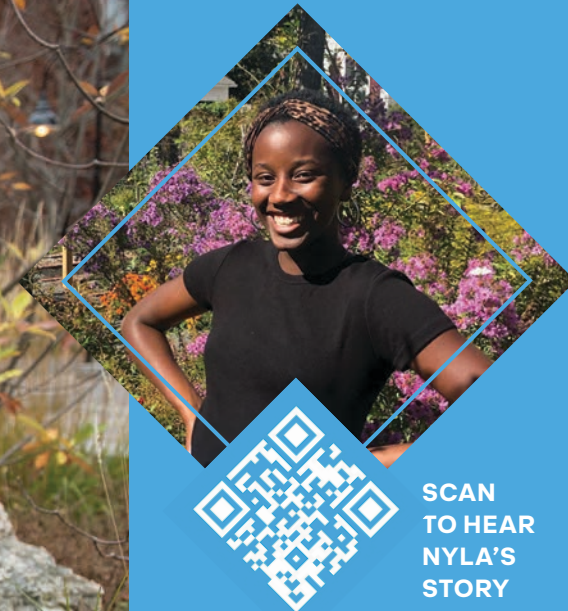
Every April, Smith holds an annual showcase for student research and performance, highlighting Smithie achievements. Student topics are relevant and self-selected, and include themes like disease prevention, health policy making and civic engagement.



ENDLESS OPPORTUNITIES

Whatever your interests, we help you find the right research opportunity:

- Research scholarships
- Volunteering in labs
- Summer Undergraduate Research Fellowships
- Independent research projects
- Work-study projects
- Senior honors theses



“YOU HAVE A
**COMMUNITY OF
PEOPLE THAT ARE
THERE FOR YOU,**
THAT WANT TO SUPPORT
YOU AND WHO WANT
TO SEE YOU DO WELL
IN YOUR RESEARCH.”

**Nyla
Johnay
Conaway**

“LANDSCAPES CAN
FOSTER COMMUNITY,
 PROMOTE AN APPRECIATION FOR
THE NATURAL WORLD
AND CREATE RESILIENCE
 IN THE FACE OF
 CLIMATE CHANGE.”



TESS ABBOT

Creating community through beautifully designed landscapes: this was something Tess hadn't considered before an off-campus internship and funded research experiences as an AEMES scholar (Achieving Excellence in Mathematics, Engineering and Sciences). Almost immediately, Smith provided exposure to innovative thinking and new ways to combine her love of design and the natural world.

MY FIRST TWO YEARS AT SMITH, I received funding through the AEMES Scholars Program. My first project was to work with a faculty mentor, Reid Bertone-Johnson of the landscape studies department, developing a website to catalog artwork created at Smith's MacLeish Field Station.

OVER MY SOPHOMORE SUMMER, I worked with two other Smith students to cut another mile of hiking trail on

the eastern side of the MacLeish property. Working with my hands in this way helped me appreciate the importance of sustainable landscapes. Without AEMES, it's likely I would not have explored all MacLeish has to offer or discovered a genuine interest in landscape design.

MY FIRST PROFESSIONAL EXPERIENCE, an internship last summer at Mathews Nielsen Landscape Architects (MNLA), was partially funded by a Praxis

stipend. I spent 12 weeks at work in lower Manhattan and was thrilled to be assigned hands-on projects.

MY SENIOR YEAR I was a student member of the Landscape Master Planning Committee, where we discussed how a sustainable landscape better aligns with Smith's core values by addressing issues of inclusivity, education and adaptation.”

EMBOLDENED TO BE ON THE FOREFRONT OF TECHNOLOGY.

Smith's Imaging Center and Digital Media Hub, both located in Neilson Library, connect you to software, digital tools, and virtual and augmented reality experiences. You have opportunities to make art, develop systems-thinking through strategic games, and improve your technical skills and digital storytelling.



Audacious action.

It's what our future calls for.

Responsible stewardship of the earth's resources is a top priority at Smith. It's the reason we're dedicated to studying ecological issues and finding sustainable solutions. And it's why we pioneer programs in landscape studies, environmental science and policy, and engineering. We're committed not only to education and research, but also to putting sustainable strategies into practice across campus.

Smith has
committed
to becoming
CARBON NEUTRAL BY
2030



56.4%

*of academic departments are
engaged in sustainability
research and scholarship.*

Initiating change.

Sustainable campus initiatives include:

- Buying and serving locally grown products
- Implementing sustainable practices campuswide
- Addressing environmental challenges through research and study
- Engaging in environmental activism through extracurriculars

Building sustainably.

All our newest buildings and renovations meet high environmental and health standards. Smith is home to several LEED-certified buildings, including Ford Hall, Cutter House, Ziskind House and the Freidman apartment complex. In addition, we have two acres of rooftop solar panels, and we're continually retrofitting older buildings to be more sustainable.



Exuberant learning. Extraordinary facilities.

An environment dedicated to beauty and shared knowledge.

We're deeply committed to sustainability along with student access and inclusivity. Our modern labs, renowned art collection, extensive women's history archive, stunning botanic gardens and newly completed state-of-the-

art library offer an immersive environment for meaningful learning. These innovative spaces also provide access to extensive technology resources, including professional-grade media equipment and facilities.

BEAUTIFUL
SPACES TO
LEARN AND
EXPLORE.

27,000
WORKS OF ART IN
THE SMITH COLLEGE
MUSEUM OF ART.

Where your ideas come to life.

The new Neilson Library, designed by renowned architectural designer Maya Lin, is the intellectual heart of the campus. Recently renovated, the library features two new wings—one bringing together Smith's unique special collections and the other filled with spaces to support scholarship, innovation and connection. In addition to having lots of books, Neilson Library offers a café, private study rooms, a digital media hub, recording studios and an outdoor amphitheater.



Mendenhall Center for the Performing Arts houses two fully equipped theaters, dance studios, design labs, lounges, and professional scene and costume shops.



Sage Hall, home of the music department, has two concert spaces and dozens of practice rooms, a digital music studio and an electronic music studio.



The botanic garden cultivates thousands of plants, including those grown under glass in the Lyman Conservatory and outdoors in the campus arboretum.

BE THE PERSON YOU WERE MEANT

TO



BECOME.

MICHELLE SOYEON LEE

As the editor-in-chief of *The Sophian*, Michelle learned how to harness the power of a platform, for good. Engaging with students through traditional print and digital media, she grew Smith's student newspaper into a publication that was conscious of its role in representation and student engagement. Her experience in the newsroom gave her the confidence to change course and pursue a post-graduate career in the courtroom, highlighting how Smith prepares students for the future in meaningful, if unexpected, ways.

THERE IS SOMETHING TO BE SAID about the timeless authority of a printed newspaper, but an online presence has undeniably become a requirement for print journalism. In such a hyperconnected digital age, this intersectional role coalesces naturally in the social media sphere.

AS A KOREAN AMERICAN I've become more conscious of how discrimination plays a role in the relationship of people of color with

the press, and how nuanced biases in media can work against minorities and build a wall of distrust. *The Sophian* has the potential to realign that relationship to something constructive for students of color and other minorities at Smith through better representation in published content and on staff.

AFTER GRADUATION I worked as a paralegal specialist at the Justice Department in D.C. Even though I didn't pursue journalism, it will always play a



role in my life. Working on *The Sophian* has improved my problem-solving skills and changed my perspective on current events and the potential of journalism for the better."

**\$71
million**

awarded
in college
grants*

Nothing stops a Smithie.

**Investing in your dreams
is our top priority.**

We ensure that you have the financial resources you need to experience everything the college has to offer. At Smith, access equals excellence. Our generous financial aid packages (grants, scholarships and loans) meet the full calculated need, within federal and institutional guidelines, of all admitted students who apply for aid by the deadlines.

We welcome your questions—we're here to walk you and your family through all your options.

Smith's grant range
runs from

**\$1,122 to
\$81,078***

Most years,
around

60%

of all traditional-aged students
receive some form
of financial assistance
from grants, loans
or both

The average need-
based grant for
first-year students is

\$51,515*

* 2021-22 estimates; could increase as numbers are finalized.

QUESTIONS?

**LET'S TACKLE
THEM TOGETHER.**

Visit [smith.edu/
financialaid](https://smith.edu/financialaid)

The power to become anything you choose.



Start Now.

When it comes to admission, we want to understand who you are beyond what's reflected on your transcript. We read each application thoughtfully, considering your life experiences and goals alongside your academic preparation and extracurricular activities. Above all, we seek motivated, determined and curious individuals who are ready to powerfully impact the future.

90%
of Smith students
are employed
within two years
of graduation.

200+
organizations
recruit virtually
and on campus
annually.



Transfer Students

Smith welcomes applications from students wishing to transfer into the sophomore and junior classes. Transfer students may be admitted for September or January.

International Students

International students make up more than 14% of the student body at Smith. You may apply to Smith under one of our three decision plans and enroll in the fall.

Key dates

There are three ways to apply to Smith. Early Decision I and II are binding programs that allow you to designate Smith as your top choice and find out your admission decision in December or January. Regular Decision gives you a third option.

EARLY DECISION I

Complete application by November 15
Interview by November 15
Decision release date: mid-December

EARLY DECISION II

Complete application by January 1
Interview by January 1
Decision release date: late January

REGULAR DECISION

Complete application by January 15
Interview by January 15
Decision release date: late March

**Let's
do this
together.**

To chat with a counselor, please
visit smith.edu/admission.

ADAPTY!
ADAPTY!
ADAPTY!

THAT'S WHAT MAKES A
Smithie.

SMITH COLLEGE

10 Elm Street, Northampton, MA 01063 | 413-585-2500 | admission@smith.edu